



DTE®

D600 Ultrasonic Endodontic Expert



Scan and log onto the website for more details.

D600 LED

Designed for Endodontic Therapy

Real-time frequency tracking:
Dynamic vibration frequency monitoring and automatic adjustment based on tip characteristics ensure the tip performs optimally.



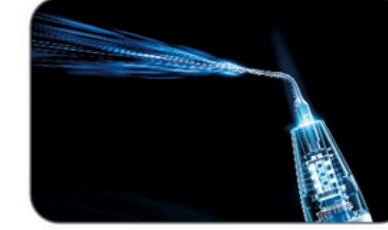
Mild power output:
Sine-wave drive to avoid stimulation caused by transient current output encountered by the tip, to achieve comfortable treatment experience.



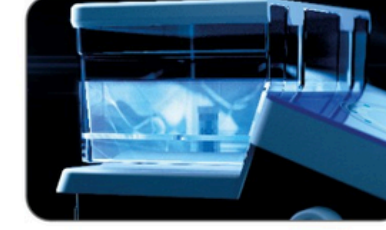
Intelligent degenerative feedback:
Automatically compensate the power as per the feedback on the resistance encountered by the tip, to achieve continuous and stable treatment.



Detachable handpiece with LED:
Adopt latest sealing technique
Soft light source for clearer field of view
Autoclavable high-tech materials



Automatic water supply system:
600ml large-capacity water tank
Can hold distilled water, sodium hypochlorite and other liquid medicines
Dual waterway design allows more convenient operation



Intelligent touch system:
Ultra-sensitive waterproof touch system enables easy mode adjustment
12 power levels available to re-tune your treatment for maximum precision



Scaling

Supragingival scaling

GD1 GD2 GD3 GD4 GD5 GD6 GD9 GD10

Cavity preparation (adults)

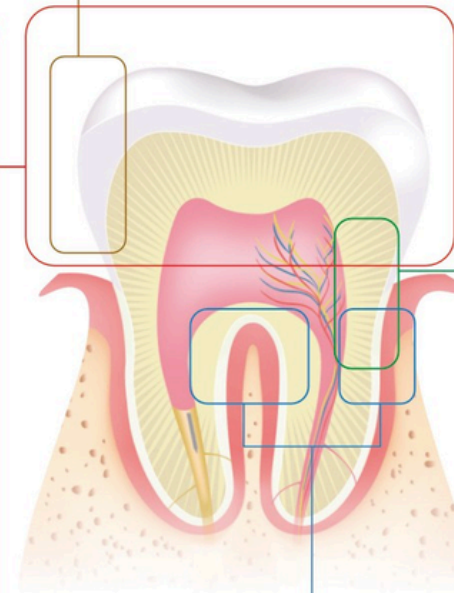
SBD1 SBD2 SBD3

SBDL SBDR

Cavity preparation (children)

SBD4 SBD5 SBD6

SBD7L SBD7R



Biofilm removal

PD21L PD21R PD22L PD22R

Implant maintenance

PD40 PD41 PD42 PD43L PD43R

Periodontics

Periodontal care

PD1 PD2L PD2R

PD3 PD2LD PD2RD

PD3L PD3R PD4

PD5 PD7 PD10

PD11 PD11D PD12

PD14L PD14R PD18

PD20 PD20L PD20R

Endodontics & Apical Surgery

Foreign body (broken file) removal

ED14 ED15 ED6 ED7

Root canal orifice locating & pulp chamber shaping

ED17 ED18 ED12D ED3D PD4D

Shoulder preparation and finishing

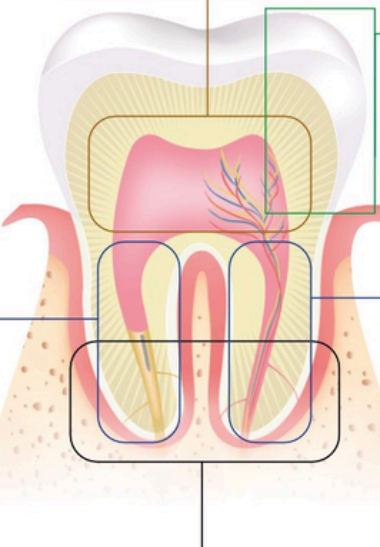
GD20 GD21

Retreatment

ED4 ED5

ED4D ED5D

ED14D ED15D



Irrigation

ED60 ED62 ED66 ED70

E71 E72 E73 E74

Retrofilling

ED10 ED10D ED11D ED19D ED20D ED21LD ED21RD ED22D ED23D ED24D ED25LD ED25RD

Ultrasonic Endodontic Expert D600:
Main functions: Ultrasonic preparation, root canal orifice locating, broken file removal, irrigation, retreatment
Other functions: Supragingival scaling, cavity preparation, shoulder preparation and finishing, periodontal care, implant maintenance

Endo Master Kit:

With its high-efficiency ultrasonic conductivity and special design, this tip can effectively remove difficult-to-remove restorations using ultrasonic technique.

Diamond-coated ball tip for removing foreign objects from the pulp chamber, which is safe, precise and efficient to locate calcified root canal orifice.

For removal of calcified debris, bad fillings and suspensions in the pulp chamber. Can also enlarge the canal wall where a broken file is located for easy retrieval.

For removal of post, broken file, filling debris, etc. in the upper 1/3 of the canal.

Extremely fine and flexible tip with good ultrasonic conductivity, used to remove foreign objects from the upper 1/3 of the canal (bendable).

Extremely fine and flexible tip with good ultrasonic conductivity, used to remove foreign objects from the apical 1/3 of the canal (bendable).

GD8

ED12D

ED3D

ED15

ED7

ED6

Dimensions: 8.9, 23.8, 18.9, 22, 17.8, 17.5, 23.2, 20.6, 17.7, 22, 22, 23.8

Guilin Woodpecker Medical Instrument Co., Ltd.
Information Industrial Park, Guilin National High-Tech Zone, Guilin, Guangxi, 541004 P. R. China
Sales Dept.: +86-773-5873196/2350599
After-sales Service Dept.: 0773-5827898
E-mail: woodpecker4@glwoodpecker.com

EC REP MedNet EC-Rep GmbH

L:Left R:Right D:Diamond-coated tip

L:Left R:Right D:Diamond-coated tip